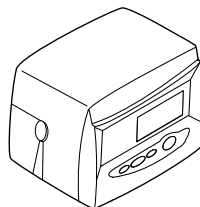


Magnum přípojky

Číslo	Kód	Název
1	1001656	Sada přípojek (3ks) pro Autotrol Magnum Cv. Lepené PVC d50mm.
	3023674	Sada přípojek (3ks) pro Autotrol Magnum IT na závít 2". Materiál: nerez.
	1040785	Sada přípojek (3ks) pro Autotrol Magnum IT. Lepené PVC d63mm.
2	1000356	Plastová matice 1 1/2" pro Autotrol Magnum Cv anebo odpadního připojení Cv/IT
3	3014556	Nerezová přípojka 1 1/2" (bez matice) pro Autotrol Magnum Cv anebo odpadního připojení Cv/IT
3	1000359	50mm PVC přípojka (bez matice) pro Autotrol Magnum Cv anebo odpadního připojení Cv/IT
*	1010160	Gumový o-kroužek pro přípojky Autotrol Magnum 1 1/2"
	1010165	Gumový o-kroužek pro přípojky Autotrol Magnum 2"
	1010162	Velký o-kroužek mezi ventil a tankem, Autotrol Magnum
	1010160	Malý o-kroužek pro vnitřní stoupačí trubku, Autotrol Magnum
	CH20805	Adaptér pro připojení na tlakovou nádobu s 6" přírubou, Autotrol Magnum
	3024790	4" nerezový adapter pro připojení na tlakovou nádobu s 4" přírubou, Autotrol Magnum
	3024785	Upínací nerezová svorka, pro 4" adapter připojení na tlakovou nádobu, Autotrol Magnum
	3026486	O-kroužek mezi adapterem 4" a ventilem Autotrol Magnum 293/298
	1040921S	PVC adaptér pro boční montáž ventilu Autotrol Magnum 293/298

MAGNUM 742-762

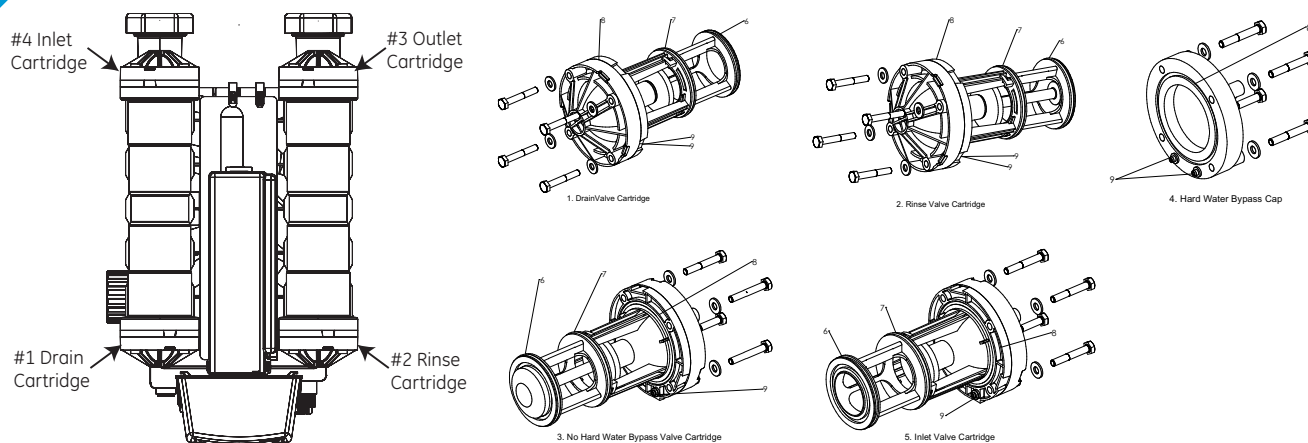
NÁHRADNÍ
DÍLY



Číslo	Kód	Název	
		Assembled DLFCs w/ O-ring and Fl. ctrls inserts:	
	1040720	DLFC 5 gpm (for 14" softener) BLU-BLK-BLK-BLK	1
	1040721	DLFC 6 gpm (for 16" softener) RED-BLK-BLK-BLK	1
	1040722	DLFC 7 gpm BRN-BLK-BLK-BLK	1
	1040723	DLFC 8 gpm (for 18" softener) GRN-BLK-BLK-BLK	1
	1040724	DLFC 9 gpm WHI-BLK-BLK-BLK	1
	1040725	DLFC 10 gpm (for 21" softener) BLU-BLU-BLK-BLK	1
	1040726	DLFC 11 gpm RED-BLU-BLK-BLK	1
	1040727	DLFC 12 gpm RED-RED-BLK-BLK	1
	1040728	DLFC 13 gpm BRN-RED-BLK-BLK	1
	1040729	DLFC 14 gpm (for 24" softener) BRN-BRN-BLK-BLK	1
	1040740	DLFC 15 gpm BLU-BLU-BLU-BLK	1
	1040741	DLFC 16 gpm GRN-GRN-BLK-BLK	1
	1040742	DLFC 17 gpm WHI-GRN-BLK-BLK	1
	1040743	DLFC 18 gpm WHI-WHI-BLK-BLK	1
	1040744	DLFC 19 gpm WHI-ORA-BLK-BLK	1
	1040745	DLFC 20 gpm (for 30" softener) BLU-BLU-BLU-BLU	1
	1040746	DLFC 21 gpm BRN-BRN-BRN-BLK	1
	1040747	DLFC 22 gpm GRN-GRN-RED-BLK	1
	1040748	DLFC 23 gpm GRN-GRN-BRN-BLK	1
	1040749	DLFC 24 gpm RED-RED-RED-RED	1
	1040730	DLFC 25 gpm GRN-GRN-WHI-BLK	1
	1040731	DLFC 26 gpm WHI-WHI-GRN-BLK	1
	1040732	DLFC 27 gpm WHI-WHI-GRN-BLK	1
	1040733	DLFC 28 gpm BRN-BRN-BRN-BRN	1
	1040734	DLFC 29 gpm BRN-BRN-BRN-GRN	1
	1040735	DLFC 30 gpm (for 36" softener) ORA-ORA-ORAN-BLK	1
	1040736	DLFC 31 gpm GRN-GRN-GRN-BRN	1
	1040737	DLFC 32 gpm GRN-GRN-GRN-GRN	1
	1040738	DLFC 33 gpm GRN-GRN-GRN-WHI	1
	1040739	DLFC 34 gpm GRN-GRN-GRN-ORA	1
	1040750	DLFC 35 gpm WHI-GRN-GRN-GRN	1
	1040751	DLFC 36 gpm WHI-WHI-WHI-WHI	1
	1040752	DLFC 37 gpm WHI-WHI-WHI-ORA	1
	1040753	DLFC 38 gpm ORA-ORA-ORA-GRN	1
	1040754	DLFC 39 gpm ORA-ORA-ORA-WHI	1
	1040755	DLFC 40 gpm ORA-ORA-ORA-ORA	1
*	1040762		1

MAGNUM 742-762

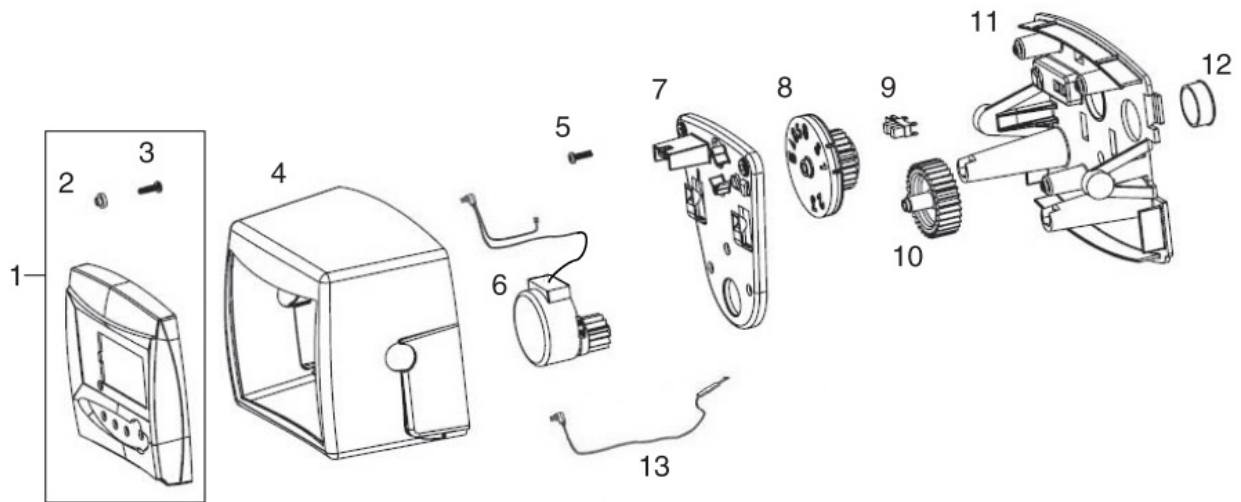
NÁHRADNÍ
DÍLY



Magnum cartridges

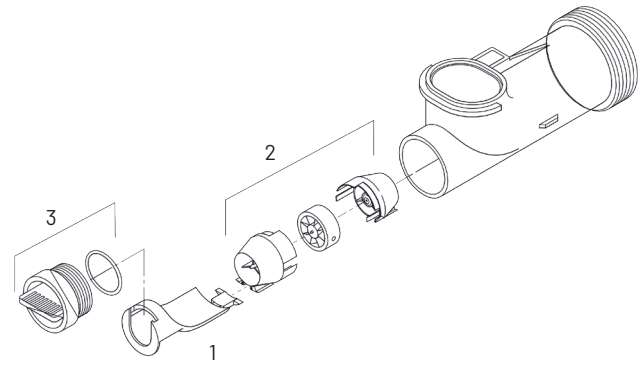
Číslo	Kód	Název		
1	1000366	Drain valve/no hard water bypass valve cartridge	1	
2	1000365	Rinse valve cartridge	1	
3	1000366	Drain valve/no hard water bypass valve cartridge	1	
4	1000336	Hard water bypass cap	1	
5	1000317	Inlet valve cartridge	1	
6	3029971	1010157	O-ring #147 EPDM	1
7	3029972	1010158	O-ring #149 EPDM	1
8	3030497	1231646	O-ring	1
9	3030531	1010116	O-ring #107 EPDM	2
*		1040690	O-ring kit (includes 1x #8, 2x #9)	1
*		1040689	O-ring kit (includes 1x#6, 1x#7, 1x#8, 2x#9)	1

Note: Items 1 & 3 are identical



Magnum Logix controls

Číslo	Kód	Název	
1+2+3		Timer Logix 742F Magnum	1
		Timer Logix 762F Magnum	1
		Timer Logix 742 Magnum	1
		Timer Logix 762 Magnum	1
2	3030921	Bushing, Logix mount	2
3	3030001	Screw	2
4		Cover, Logix Magnum	1
5	3030001	Screw	2
6		Motor + cable 700 series controller, 12V 50/60 Hz	1
7		Gear plate, Magnum Logix control	1
8		Drive gear, Magnum Logix control	1
9		Module, sensor, photo interrupter	1
10		Idle gear, Magnum Logix control	1
11		Back plate, Logix Magnum control	1
13		Turbine cable, Logix, 32" (Magnum it Logix)	1
		Turbine cable, Logix, 10ft (Magnum Cv Logix)	1
		Turbine cable, Logix, 25ft	1
5+6+7+8+9+10+11+12		Logix Magnum control mech assy (items 5,6,7,8,9,10,12)	1
*		Wall mount transformer 220V/12V UK	1
*		Wall mount transformer 220V/12V EUR	1
*		Remote mount kit, with 10 ft cable (control not included)	1
		Remote mount kit, no cable (control not included)	1



Magnum IT turbine

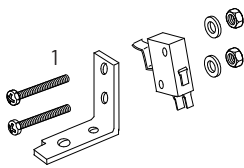
Číslo	Kód	Název	
1	1000074	Insert, corner 2"	1
2	1232965	Assy, turbine 2" elbow	1
3	1040688	Assy, plug	1
*	1266722	Cable and turbine sensor, Logix Magnum it, 32"	1

2" External turbine assy

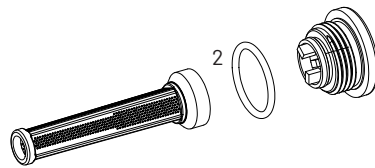
Číslo	Kód	Název		
*	1033358	2" turbine only	1	
*	1034079	3023537	2" turbine assy with 2" stainless steel BSP adapters	1
*	1034080	2" turbine assy with 2" PVC adapters	1	
*	1034081	2" turbine assy with 63 mm PVC adapters	1	
*	1030891	Gasket, 2"	2	
*	1266723	Cable and turbine sensor, Logix Magnum Cv, 10ft	1	
*	1266724	Cable and turbine sensor, Logix Magnum Cv, 25ft	1	
*	1040784	Kit Fitting 2" PVC 293/298	1	
*	3023841	Kit Piping Adapters, 2" BSP, SS	1	
*	1040785	Kit Adapter Pipe 63mm CPVC 298 IT	1	

1" external turbine assy

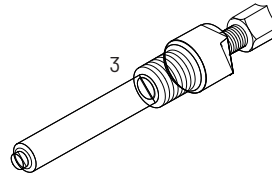
Číslo	Kód	Název		
*	1033317	1" turbine only	1	
*	1033238	1" turbine assy with 1" PVC adapters	1	
*	1033239	1" turbine assy with 32 mm PVC adapters	1	
*	1034385	1" adapter nut for 1" turbine and perf.	2	
*	54F	1030541	Gasket for 1 in pipe or tube	2
*	1266723	Cable and turbine sensor, Logix Magnum Cv, 10ft	1	
*	1266724	Cable and turbine sensor, Logix Magnum Cv, 25ft	1	



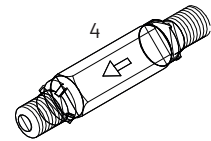
Switch Kit



Pilot Filter Screen Assembly



External Pilot Feed Adapter



Pilot System Check Valves

Magnum miscellaneous

Číslo	Kód	Název		
1	1041049	3019468	Kit 1 switch 0.1 Amp (also used on 962M & 962S controls)	1
*	1041063	3019469	Kit 1 switch 5 Amp	1
*	1041048	3019467	Kit 3 switch 5 Amp	1
*	1041039	3019466	Kit 3 switch 0.1 Amp	1
*		1239979	Cable harness for remote regeneration on 74XF/switch connector	1
2		1000226	Pilot screen assy (includes pilot screen, pilot screen cap & O-ring)	1
3		1040668	External pilot feed adapter (separate source pilot water)	1
4		1009817	Pilot system check valve (to be used w/ item 3)	1
		3019522	Kit switch 0.1 Amp w/breakaway cam	1
*		3019523	Kit Switch 5 Amp	1
*		3025780	Internal pilot system check valve	1
		1034356	Breakaway cam for microswitch	1